

DynamicRoll® FRIGO 1

A high-speed door with an 18 mm insulated door curtain, specially designed for cold storage applications.



HIGH
SPEED
DOORS

DynamicRoll® FRIGO 1

A high-speed door with an 18 mm insulated door curtain, specially designed for cold storage applications.

The DynamicRoll® **FRIGO 1** is a self-repairing insulated fabric roll up door. The design provides a thermal barrier between temperature-controlled spaces.

The insulated panel design helps prevent frost and ice buildup. The dual layer fabric and insulated material provides an 18 mm thick curtain.

The frame structure is equipped with heating cables placed in the track system and connections to prevent condensation and ice on the guides. These features make the door ideal for applications in refrigerated spaces.

FEATURES AND BENEFITS



FAST

- Reduces convection
- Safe for users & goods



RELIABLE

- Minimize down-time
- Minimize maintenance



INSULATED CURTAIN

- Saves energy
- Reduces conduction



SUPERB SEALING

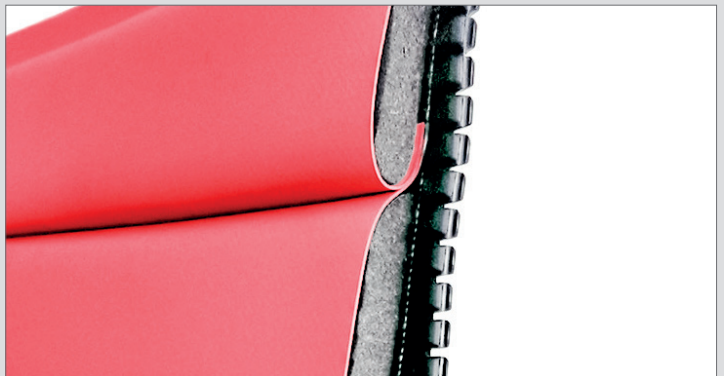
- Reduces infiltration

INSULATING SEGMENTS ON THE CURTAIN

The specially designed PVC curtain with 18 mm polyethylene strips ensures a good insulating capacity of the door.

In addition, this extra insulation reduces the chance of condensation forming on the door leaf.

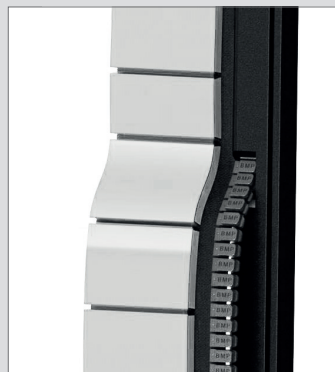
This means less risk of ice forming on the curtain, less water on the floor, improving safety around the door.



A UNIQUE PATENTED BMP GUIDE SYSTEM

The door is fitted with patented guides as standard, consisting of polyethylene. The PVC fabric is held in the guide by means of a zipper. In the event of a collision, the zipper comes loose from the guides, limiting damage to the door leaf. When the door opens again, the zippers with the door leaf are pulled back into the guides via reintegration slots.

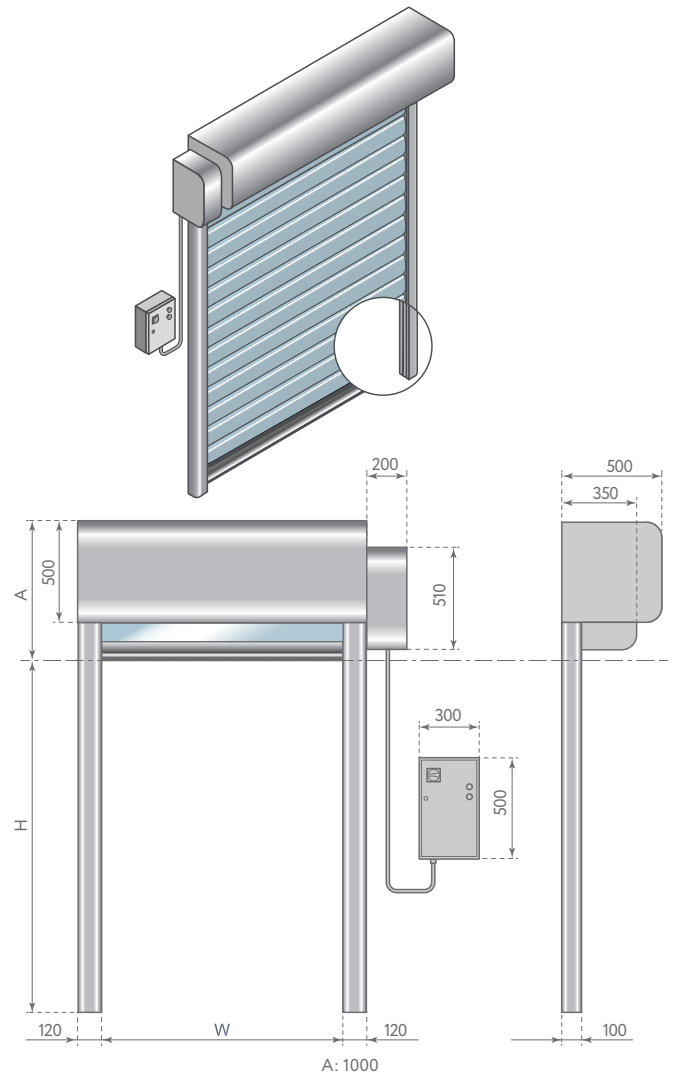
As a result, in the event of occasional collisions, the damage is limited and the TCO is low.



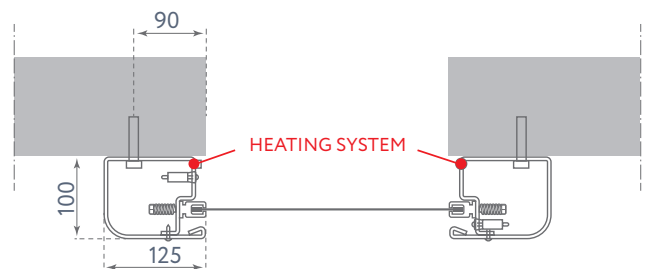
TECHNICAL DATA

MAXIMUM DIMENSIONS	W 4.000 mm x H 4.500 mm
SPEED	Max. opening speed: up to 1 m/s
	Closing speed: 0,6 m/s
CYCLES TEST	1.000.000
WIND RESISTANCE	Class 2
STRUCTURE	Not self-supporting
FRAME / MOTOR COVER HOOD	STANDARD - Galvanized steel
	OPTIONAL - Powder coated steel - Stainless steel 441/316
CURTAIN	STANDARD Double curtains welded with expanded polyethylene insulating 18 mm thick.
	OPTIONAL - FDA (white) - Antistatic
SLIDING SYSTEM	Patented sliding system with high density polyzene self-lubricant equipped of sliding zipper directly on curtain
CONTROL PANEL	STANDARD Powder coated steel box IP54 (300 x 500 x 150 mm)
	OPTIONAL - Stainless steel - PVC box IP65 (300 x 400 x 150 mm)
	Inverted system 50/60 Hz with absolute encoder
	Power supply 1-ph, 230V max 16A
	Power supply 3-ph, 400V max 10A
	Power supply 3-ph, 230V max 16A
	Start/stop button
	2 free contacts (door open/closed/alarm)
	Automatic/manual interlocking between 2 doors
	IP rating for motor and control panel IP54
WIRING	Plug and play system IP65
SAFETIES	STANDARD - Photocells set IP65 - Anti-jam sensor reverse - WIFI safety edge IP65
	OPTIONAL - Multi ray light curtain barrier H 2500 IP67
EMERGENCY OPENING	STANDARD - Hand crank
	OPTIONAL - Chain system - Counterweight system - UPS battery
HEATING-KIT	Heater on electrical components and mechanical, heating cable 30W ml
VENTILATION SYSTEM	NA
AIR FLOW OF AIR SYSTEM	NA
ADVISED OPERATING TEMPERATURE & HUMIDITY	-30°C/+2°C <30% humidity

DOOR SPACE REQUIREMENTS



FIXING DETAILS



EN 13241 CERTIFICATION

STANDARD	RIF.	TEST ACC.	RESULTS
WATER PERMEABILITY	EN 12425	EN 12489	Class 1
WIND LOAD	EN 12424	EN 12444	Class 2
WIND PERMEABILITY	EN 12426	EN 12427	Class 1
SAFE OPENINGS	EN 12453	EN 12445	-
MECHANICAL RESISTANCE	EN 12604	EN 12605	-
UNINTENDED MOVEMENTS	EN 12604	EN 12605	-
THERMAL TRANSMITTANCE	EN 12428	EN 12428	2,2 W/m²K
PERFORMANCE (CYCLES)	EN 12604	EN 12605	1.000.000

Values can change depending on door dimensions

OPTIONAL ACCESSORIES

RADAR



**OPENING POINT
RADAR TOF/
SPOT**
for internal
use only



**INFRARED
RADAR**
with cross-
movement
adjustment



INFRARED RADAR
motion and presence
(pedestrian/forklift) radar

TRAFFIC LIGHTS



**GREEN
FIXED
STANDARD**
traffic light



**RED
FIXED
STANDARD**
traffic light



**LED
TRAFFIC
LIGHT**
with
countdown

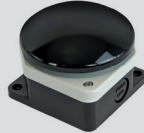


**LED
TRAFFIC
LIGHT
BARRIERS**
(connection
card included)

BUTTONS



**OPENING
GREEN
BUTTON**
with box



**OPENING
BLACK
BUTTON**
with box



**FREEZE
STOP
BUTTON**
with box



**NO
TOUCH
BUTTON**

VARIA



**WIND
GAUGE**



**KEY
SELECTOR**



**REMOTE
CONTROL**



**PULL CORD
SWITCH**



**MAGNETIC
LOOP
DETECTOR**

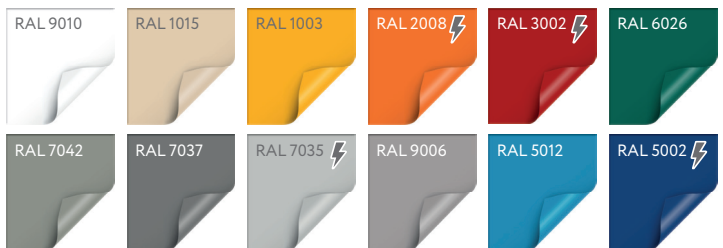


**BOLLARD
B-PROTECT**

CHARACTERISTICS BY DATASHEET

	Scan this QR-codes to watch or download datasheets
Technical information about standard pvc	

AVAILABLE CURTAIN COLORS STANDARD PVC



⚡ Antistatic available



BMP Europe S.r.l. reserves the right to change the properties of its products or components without notice, subject to its policy of continuous product development. The doors shown are example applications. No part or extract may be reproduced without our prior permission.



**HIGH
SPEED
DOORS**

Strada della Freisa 1
14019 Villanova D'Asti (AT) Italy
tel: +39 0141 948843
www.bmpdoors.com